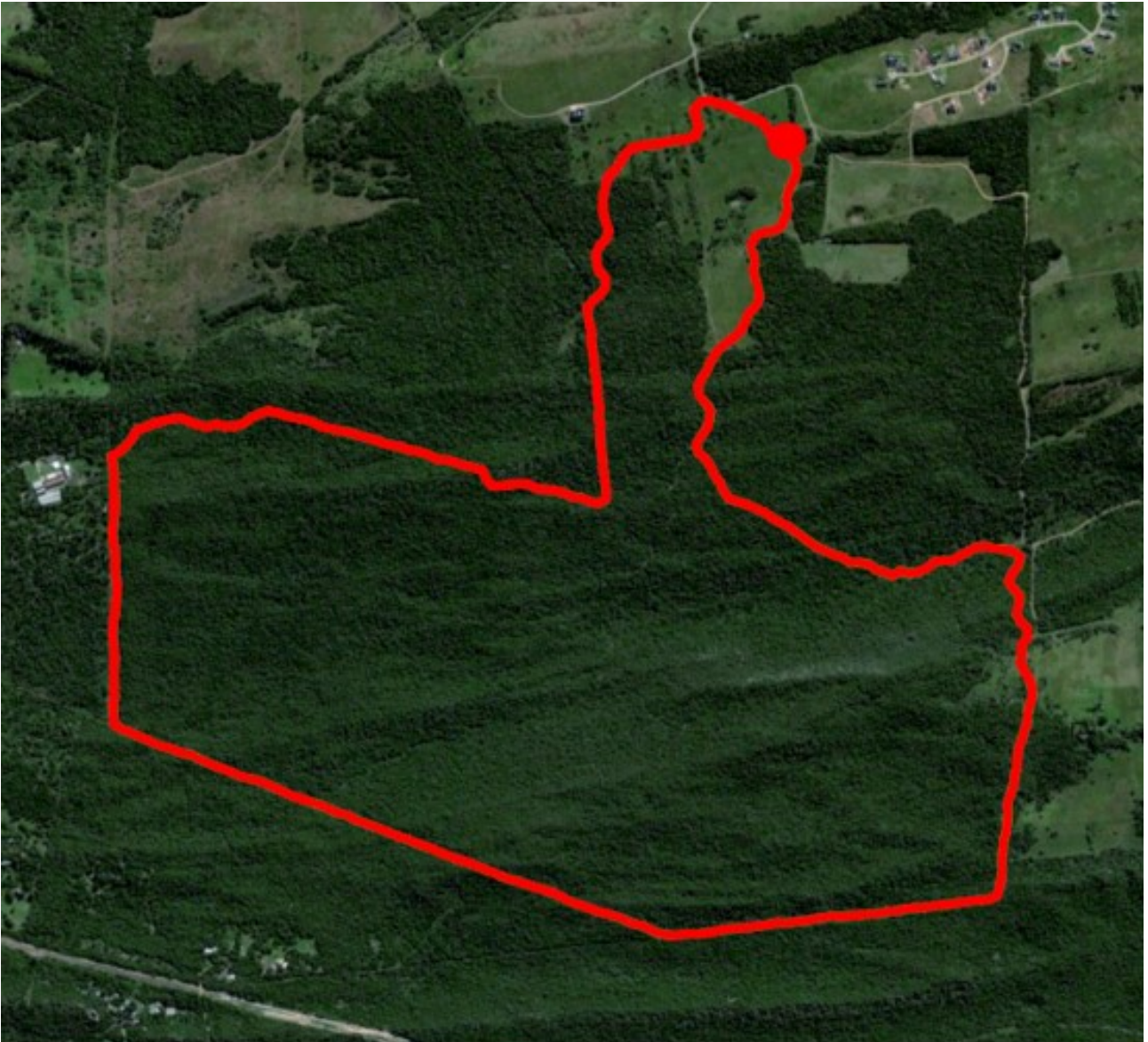


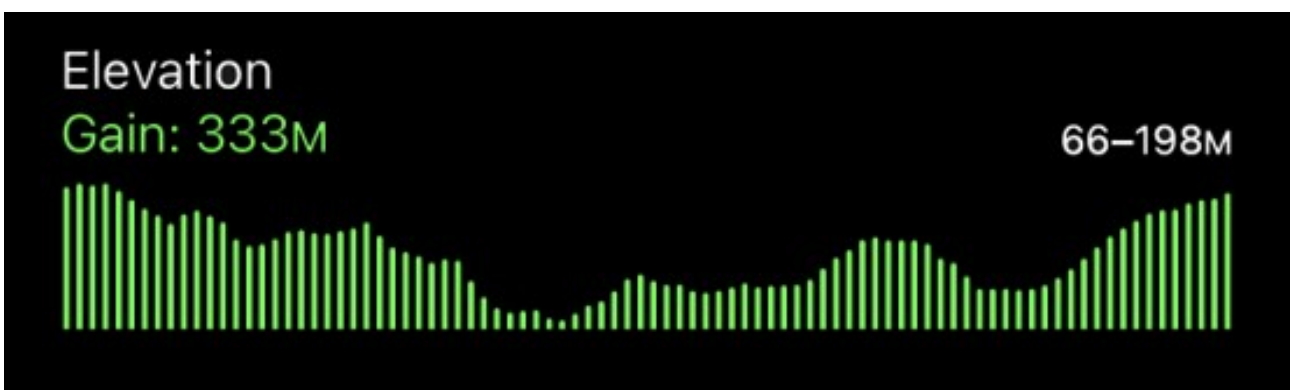
Bushbuck Trail



Distance: 9.5km

Difficulty: 5/5

Elevation:



Location:

On Royalston Nature Reserve. Park at the Boma. If there is a function at the Boma park at the parking area behind the Boma next to the Lakehouse road.

Markers:

Red.

Description:

This trail is in the process of being maintained.

- This trail starts by following the Yellowwoods trail.
- Leaving the Boma entrance turn right and follow the gravel road to the Lakehouse road.
- After a short walk along this road turn left onto a two-track.
- Follow the two-track to an entrance to the forest on the left below stand 384.
- The pathway starts off easily and then gets to a steep downhill (which can be treacherous when wet).
- While walking along this section of the trail be on the lookout for the Yellowwood trees (7 have been counted so far). One is a really beautiful specimen.
- When you reach the boundary fence make a left turn and follow the fence line.
- A lot of this section is single track.
- There is a very steep hill (40° angle) that you need to negotiate.
- Upon reaching the bottom of a hill you will reach an intersection, go straight along the fence line.
- This trail follows the boundary fence sometimes bringing you away from the fence, but continually returning you to the fence.
- Although you have the fence on your right the vegetation is lush and thick.
- Approximately 700 metres from the south western corner you will see a number of signs. At this point there is a cut through to the Forest Trail. Keep going straight along the boundary fence for the Bushbuck Trail.
- There are a number of steep uphill and downhills, one of which is very sandy.
- Ultimately you will join back with the Forest Trail.
- You walk down a pathway to the dam next to the 90° turn on the Lakehouse road.
- Follow the Forest Trail back up until you exit the forest.
- Follow the two-track back to the Boma.