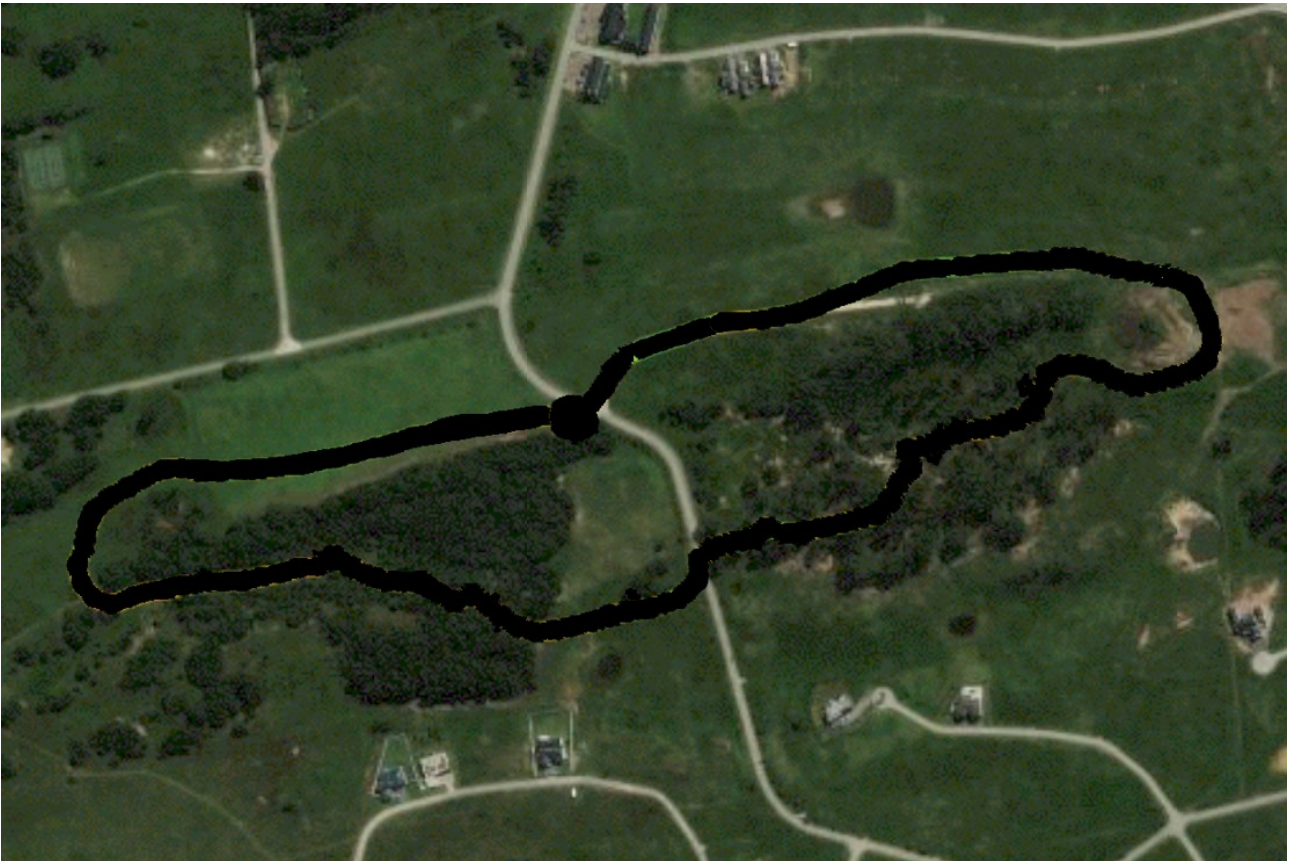


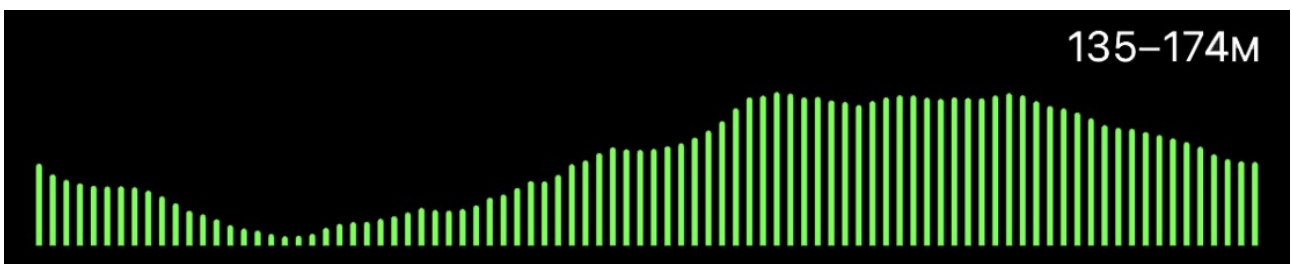
## Bluegum Trail



**Distance:** 2.1km

**Difficulty:** 1/5

**Elevation:**



**Location:**

On Royalston Estate. Park your vehicle at the golf driving range parking.

**Markers:**

Black.

**Description:**

- Walk along the paved road towards the sewerage plant (eastwards).
- When the paving ends walk along the two-track on the left.
- You will come to a dam with an island.
- Take note of the indigenous trees that have been planted along the banks around the dam.
- Walk around the dam to the entrance to the Bluegum Forest.
- You will now be walking in the opposite direction (westwards).
- Enter the forest and follow the black arrows.
- You will come out near the gate into Livingstone (3) and Canterbury (4) Villages.
- Cross the road and walk on the two track to the left of the big trees.
- Walk towards the forest below village 4 and look for the entrance.
- Walk into the forest and follow the path.
- You will come to a fence where the old nursery is. Go through the gap in the fence and follow the path.
- At the exit you will turn right towards the office buildings.
- Turn right and walk past a dam on your right.
- Walk along the side of the golf driving range. Watch out in case someone is hitting golf balls on the range.
- Walk back to the car park.
-