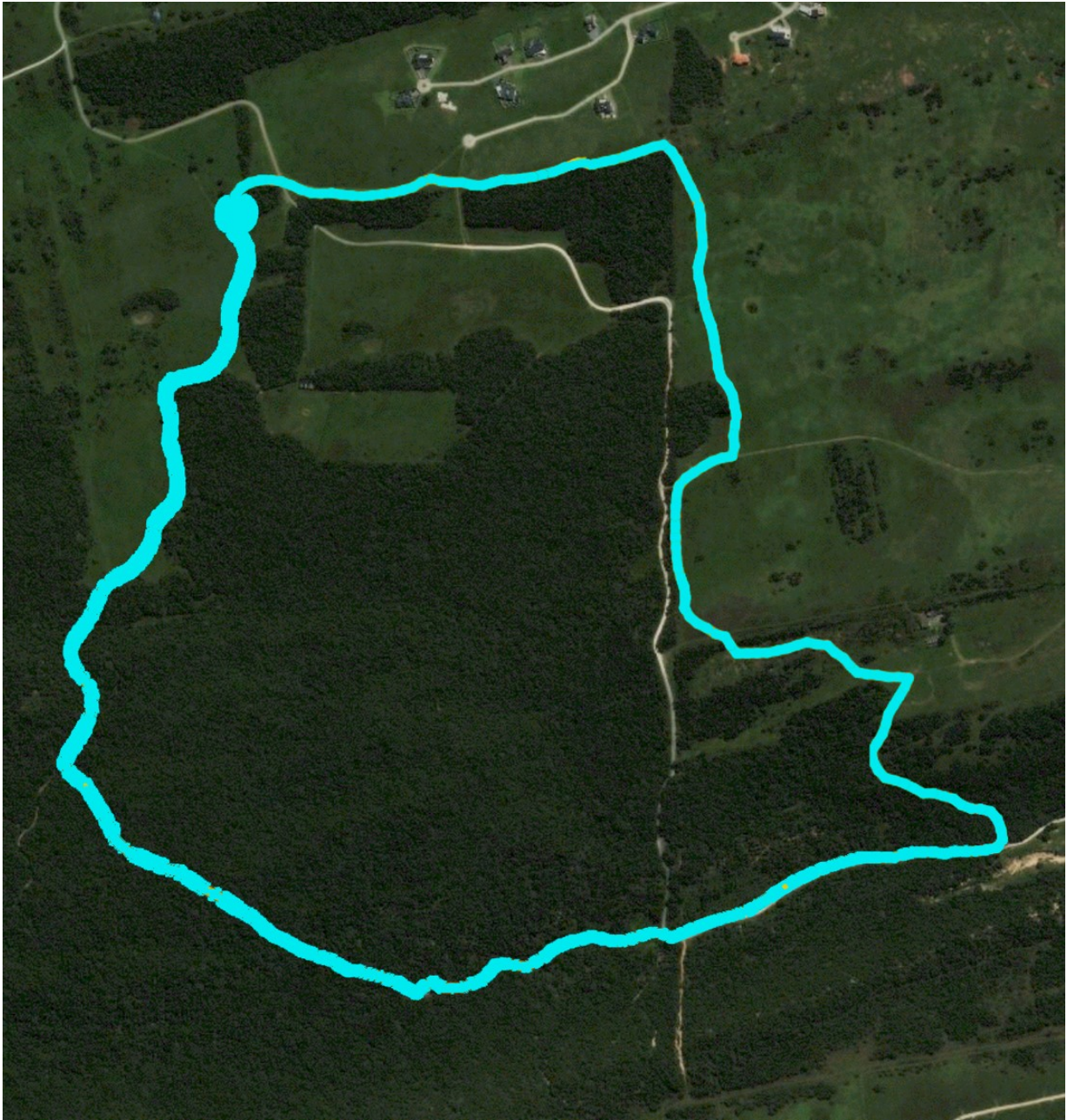


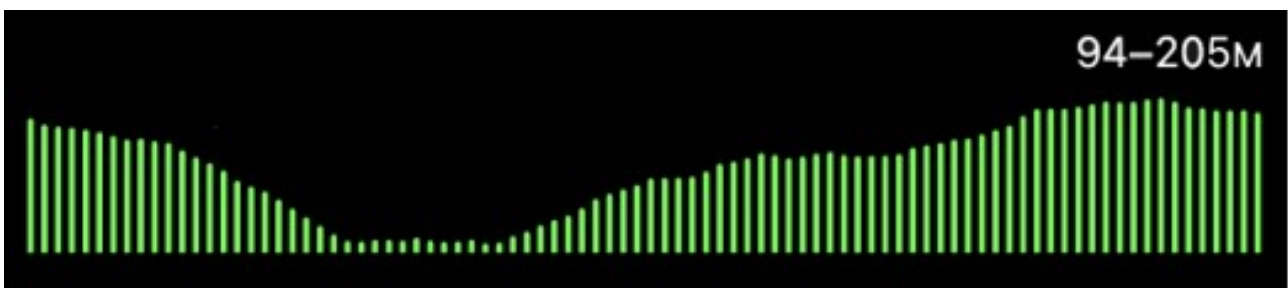
Outeniqua Trail



Distance: 5km

Difficulty: 3/5

Elevation:



Location:

On Royalston Nature Reserve. Park at the Boma. If there is a function at the Boma park at the parking area behind the Boma next to the Lakehouse road.

Markers:

Turquoise.

Description:

- Leave the Boma entrance and turn slight left to follow a two-track along the edge of the forest.
- At the bottom you will find the entrance to the forest.
- Walk down through this beautiful forest and then turn left. (This is the return leg of the Forest Trail). There are plenty of birds to see and listen to along this leg.
- At the bottom of the hill you will pass a little dam and then join the gravel Lakehouse road.
- Walk along this road until you find a track up to the left (inaccessible for vehicles).
- Walk up this track with trees forming an overhead canopy.
- At the top veer left and zigzag a bit down the hill keeping the old farmhouse on your right.
- At the top of this next hill turn left and then almost immediately right onto a track that runs down alongside trees on the left. (The Lakehouse road is on the other side of these trees).
- Turn right onto the Anglers road, walk a short distance then turn left onto a track.
- Walk up this track to an amazing big Outeniqua Yellowwood tree.
- Take a break on the memorial bench and look out for animals on the plains.
- Continue up the hill past a small waterhole on the right. This is an extremely popular drinking spot for many species of animals.
- Near the top there is another bench on the right where you can relax and enjoy the wonder of the Royalston Wildlife and Nature Reserve.
- At the top turn left onto the two-track and walk along Giraffe Hill ridge behind the houses.
- Follow this two-track to the Boma, returning to your starting point.